

Mary Maxim[®]

No. 401

PRAIRIE PRANCERS

MEN'S 4 PLY CARDIGAN

SIZES: 38 - 40 - 42 - 44

GRAPH-STYLE KNITTING PATTERN

An **EXCLUSIVE*** Mary Maxim feature . . .

THIS PATTERN IS COMPLETE WITH GRAPHS
FOR BOTH RAGLAN & SET-IN SLEEVE STYLES!

Price 6d.

Great Britain

Price 25c

Canada & U.S.A.

IMPORTANT
to ensure a
correct fit
USE ONLY . . .



It has been specially created
for use with this pattern

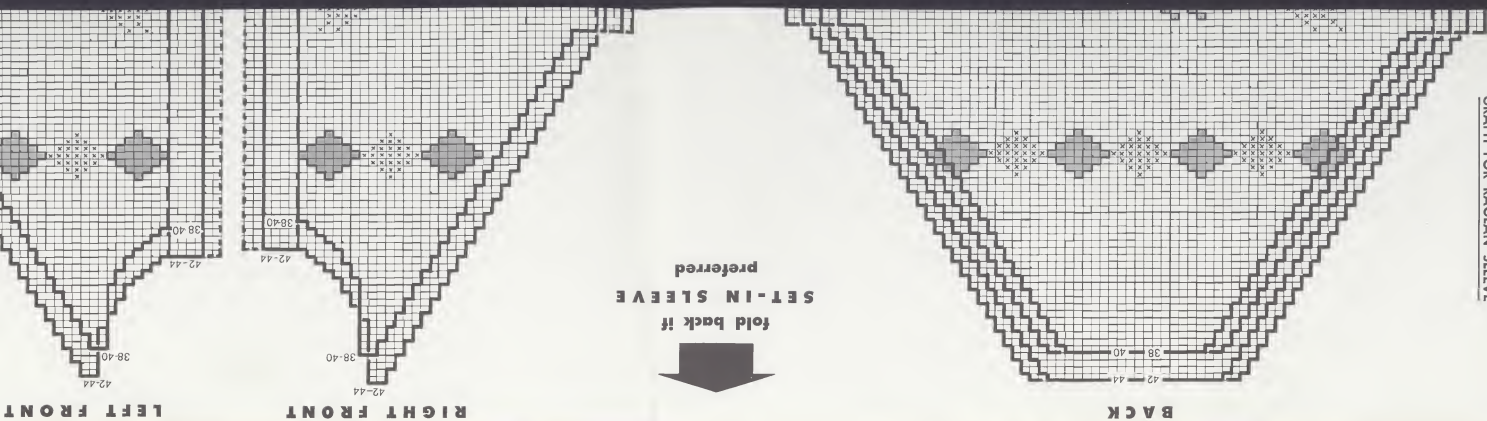
COLOR FAST — SHRINK RESISTANT — MOTH PROOF



AN ORIGINAL KNITTING DESIGN BY

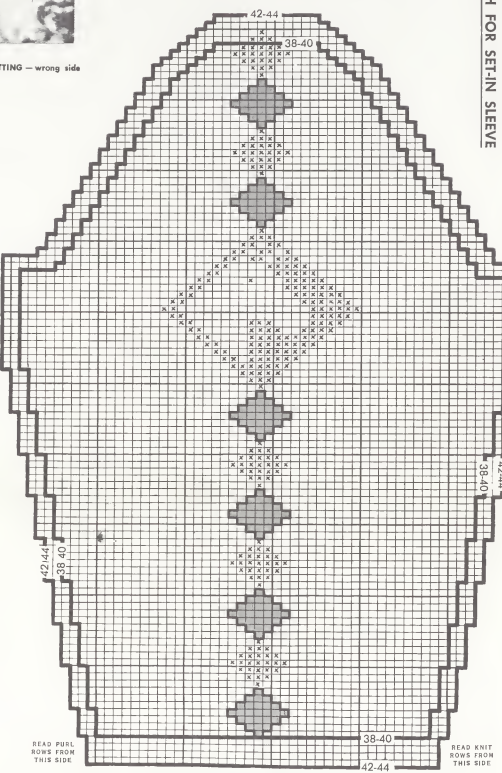
Mary Maxim[®]

* Patented 1957 in Canada, U.S. Patent Pending



fold back if
SET-IN SLEEVE
preferred

RIGHT SLEEVE



KNIT 3 INCHES FIRM RIBBING BEFORE STARTING GRAPH

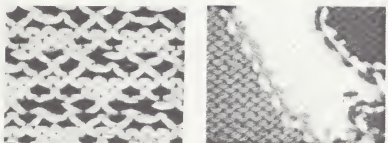


FIG. 1 FAIR ISLE KNITTING — wrong side

FIG. 2 COLOURED PATTERN KNITTING — wrong side

HOW TO WORK DESIGNS

FAIR ISLE KNITTING: (Fig. 1): This is the method that is used when there are two or more colours in one row, but only a few sts. of each colour are knitted at a time to make up the pattern; so that it is necessary that the colours not in use be woven along on the wrong side of work.

This is done in the following way: join on design colour, and with the main colour held taut in the left hand, insert the point of the right hand needle into the next st., the point of the right hand needle passing under the main colour wool, k. the st. and slip it off the needle. Lower the main colour wool, which is being held in the left hand, and k. the next st. in the usual way. Continue thus along the row, remembering to always twist the two wools tog. before changing the colour that is in use, to avoid leaving a hole in the knitting. For the p. rows follow the same method, thus the wool or wools that are not in use are woven along on the wrong side of the work.

COLOURED PATTERN KNITTING: (Fig. 2): Use a separate ball of wool for each coloured section of the pattern, and for the background in between the pattern. This method is only used where there are large areas of solid colour, but it is not necessary to weave the colours not in use to the end of the rows, just leave them hanging at the back of the work, when that particular colour is finished, to be picked up on the return row. It is very important to twist the two wools tog. when changing from one colour to another.

SHAWL COLLAR: With main colour wool and No. 4 needles, cast on 8 sts. **1st row:** K. **2nd row:** K. 2, inc. in next st., k. to last 3 sts., inc. in next st., k. 2. **Rep.** 1st and 2nd rows 3 times more. (16 sts. on needle). **9th row:** K. **10th row:** K. 2, inc. in next st., k. to end of row. **Rep.** 9th and 10th rows 5 times more (22 sts.). K. 70 rows even. Now begin to shape for the other side.

91st row: K. to last 4 sts., k. 2 tog., k. 2. **92nd row:** K. Rep. the last 2 rows until 16 sts. remain. **103rd row:** K. 2, k. 2 tog. to last 4 sts., k. 2 tog., k. 2. **104th row:** K. Rep. the last 2 rows, until 8 sts. remain, cast off.

BLOCKING AND FINISHING: Sew in all the ends of wool neatly on the wrong side, with a bodkin or large darning needle. Press all the pieces, except the collar, ribbing, and garter-st. band, lightly on the wrong side under a damp cloth. Match the designs, and sew the seams with an overcast st., taking only one strand of wool from each side of seam. Sew down the pocket pieces on the wrong side. Sew the side of collar with the most inc. and dec. to the neck edge of cardigan, joining the cast-on and cast off edges of collar, to the garter-st. front bands at neck edge. Place the zipper on the wrong side of work, so that the metal edge is lined up evenly with the front edges of the cardigan, then base the zipper in position, matching the designs, and sew securely. By placing the metal edge of zipper evenly with front edges of cardigan, the zipper will not show.

WASHING INSTRUCTIONS

USE MARY MAXIM COLD WATER SOAP. IT HAS BEEN SPECIALLY FORMULATED FOR WASHING WOOLEN GARMENTS.

Use one tablespoonful in pan or sink of lukewarm water. Work up light suds. Wash in usual manner, working suds through garments until soil is loosened. Rinse thoroughly in lukewarm water. Gently press out excess moisture. Lay out flat to dry, away from heat. Use towels to prevent colors transferring from front to back while drying. Pre-treat heavily soiled spots directly with MARY MAXIM cold water soap before washing. To help set colors, add one-quarter cup of vinegar to rinse waters.



RIGHT SLEEVE: Begin at the lower edge. With No. 7 needles and main colour wool, cast on 38 sts. for size 38 and 40; 40 sts. for size 42 and 44; and work 3 inches in k. 2, p. 2 ribbing.

Change to No. 4 needles and stocking-st., and proceed to work from the graph. Work the design by the "Coloured Pattern Knitting" directions, using a ball of the main colour at the beginning and end of the needle, and the different colours indicated in the centre. Inc. as indicated for the sleeve shapings, and after working the shapings for the top of the sleeve, cast off on the last row.

LEFT SLEEVE: Work exactly as for the right sleeve until ready to proceed from graph. Change to No. 4 needles and beginning with a k. row, read the k. rows from left to right and the p. rows from right to left, thus the design on the left sleeve pattern will be reversed to correspond with the right sleeve.

o ensure a correct fit, use only MARY MAXIM 4 PLY NORHLAND WOOL

MATERIALS REQUIRED

(Quantities shown are given in 4 oz. skeins.)

NEEDLES: 1 pr. No. 4, 1 pr. No. 7 English Gauge — 1 1/2" long. (Equivalent in American Gauge needles: 1 pr. No. 9, 1 pr. No. 6.)

GUAGE: 3 1/2 Stitches and 5 Rows = 1 inch.

1 Steel Bodkin Needle for sewing seams, 1 Heavy-weight seam and zipper OR 8 large buttons.

Background	Colour	SIZE 38	SIZE 40	SIZE 42	SIZE 44
Hereses and Trim	Colour	11 skeins	11 skeins	11 skeins	12 skeins
Hereses and Trim	Colour	1 skein	1 skein	1 skein	1 skein
Hereses and Trim	Colour	2 skeins	2 skeins	2 skeins	2 skeins

SUGGESTED COLOUR COMBINATIONS

Background	White	White	White	Blue
Hereses and Trim	Red	Red	White	White
Hereses and Trim	Dark Brown	Dark Brown	Black	Dark Brown

GENERAL INSTRUCTIONS — Read Carefully Before Starting!

ABBREVIATIONS: K., knit; P., purl; st., stitch; sts., stitches; rep., repeat; tog., together; inc., increase or increasing; dec., decrease or decreasing; sl., slip.

Each square on the graph represents a stitch. Changes in colour are shown on graph with different symbols. Every row is shown, both k. and p. rows. Follow the graph from right to left for k. rows, and from left to right for p. rows. When graph shows an extra square, inc. one st., when graph shows one less square, dec. one st.

Sizes 38-40-42-44 are all shown on the graph. These sizes are based on the chest measurements, however additional room for freedom has been included, thus it is not necessary to knit a larger size than the wearer would normally require. Ribbing is not included on the graph but it is explained in the printed instructions below each chart. A ruler or straight edge will help in reading the rows on the graph. Outline the size desired with a coloured pencil for ease in following.

GAUGE: 3 1/2 sts. and 5 rows = 1 inch on No. 4 needles. It is very important that you obtain the correct tension as this will determine the finished size of the garment. Make a sample piece as follows: With No. 4 needles cast on 14 sts., k. 1 row, p. 1 row for 20 rows. Cast off with a damp cloth. Check your tension carefully. If smaller, try again with a size larger k. If larger, try again with a smaller needle.

INCREASES AND DECREASES: To inc. one st., work two from one, then knit back of same st. slipping it off left hand needle. To dec. one st., take 2 sts., tog. Decrease of more than one st. must be cast off at the beginning of the row.

MISS MARY MAXIM,®
Fibre Furon
PARIS, ONTARIO

MISS MARY MAXIM,®
Fibre Furon
MICHIGAN, U.S.A.

MISS MARY MAXIM,®
LEICESTER, ENGLAND

PRINTED IN ENGLAND

AN ORIGINAL KNITTING DESIGN BY **Mary Maxim**®

AN EXCLUSIVE* Mary Maxim feature... THIS PATTERN IS COMPLETE WITH GRAPHS FOR BOTH RAGLAN & SET-IN SLEEVE STYLES!

KNITTING PATTERN

GRAPH-STYLE

IMPORTANT to ensure fit correct in USE ONLY... It has been specially created for use with this pattern.

COOL, FAST — SHINING, RESISTANT — MOTH PROOF

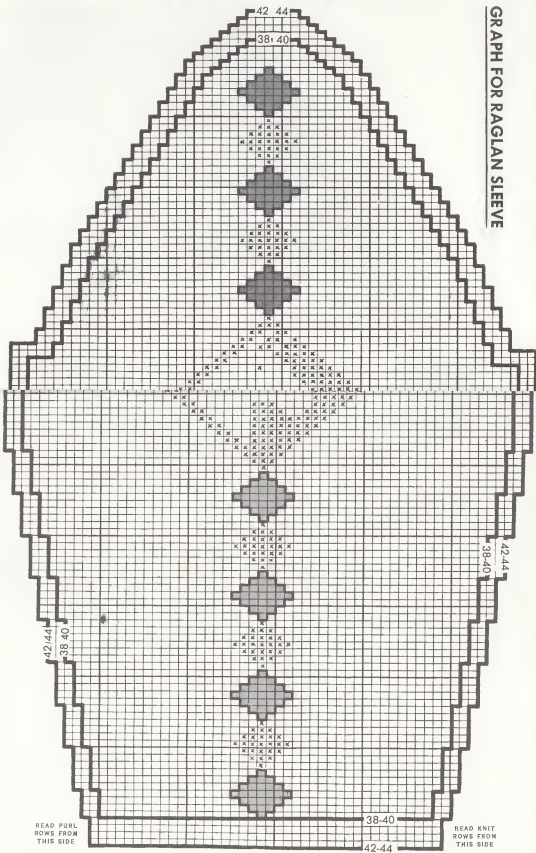
PRAIRIE PRANCERS
MENS 4 PLY CARDIGAN
No. 401
Price 6d.
Grand Britain
Price 25c
Canada & U.S.A.
SIZES: 38-40-42-44

*Patented 1927 in Canada, U.S. Patent pending


 fold down if
RAGLAN SLEEVE
 preferred

RIGHT SLEEVE

GRAPH FOR RAGLAN SLEEVE



KNIT 3 INCHES FIRM RIBBING BEFORE STARTING GRAPH

that are not in use are woven along on the wrong side of the work.

COLOURED PATTERN KNITTING: (Fig. 2): Use a separate ball of wool for each coloured section of the pattern, and for the background in between the pattern. This method is only used where there are large areas of solid colour, but it is not necessary to weave the colours not in use to the end of the rows, just leave them hanging at the back of the work, when that particular colour is finished, to be picked up on the return row. It is very important to twist the two wools tog, when changing from one colour to another.

SHAWL COLLAR: With main colour wool and No. 4 needles, cast on 8 sts. *1st row:* K. *2nd row:* K, 2, inc. in next st, k, to last 3 sts, inc. in next st, k, 2. Rep. 1st and 2nd rows 3 times more. (16 sts. on needle). *9th row:* K. *10th row:* K, 2, inc. in next st, k, to end of row. Rep. 9th and 10th rows 5 times more (22 sts.). K, 70 rows even. Now begin to shape for the other side.

91st row: K, to last 4 sts., k, 2 tog., k, 2. *92nd row:* K. Rep. the last 2 rows until 16 sts. remain. *103rd row:* K, 2, k, 2 tog., k, to last 4 sts, k, 2 tog., k, 2. *104th row:* K. Rep. the last 2 rows, until 8 sts. remain, cast off.

BLOCKING AND FINISHING: Sew in all the ends of wool neatly on the wrong side, with a bodkin or large darning needle. Press all the pieces, except the collar, ribbing, and garter-st. band, lightly on the wrong side under a damp cloth. Match the designs, and sew the seams with an overcast st., taking only one strand of wool from each side of seam. Sew down the pocket pieces on the wrong side. Sew the side of collar with the most inc. and dec. to the neck edge of cardigan, joining the cast-on and cast off edges of collar, to the garter-st. front bands at neck edge. Place the zipper on the wrong side of work, so that the metal edge is lined up evenly with the front edges of the cardigan, then baste the zipper in position, matching any designs, and sew securely. By placing the metal edge of zipper evenly with front edges of cardigan, the zipper will not show.

WASHING INSTRUCTIONS

USE MARY MAXIM COLD WATER SOAP. IT HAS BEEN SPECIALLY FORMULATED FOR WASHING WOOLLEN GARMENTS.

Use one tablespoonful in pan or sink of lukewarm water. Work up light suds. Wash in the usual manner, working suds through garments until soil is loosened. Rinse thoroughly in lukewarm water. Gently press out excess moisture. Lay out flat to dry, away from heat. Use towels to prevent colors transferring from front to back while drying. Pre-treat heavily soiled spots directly with MARY MAXIM cold water soap before washing. To help set colors, add one-quarter cup of vinegar to rinse waters.



RIGHT SLEEVE: Begin at the lower edge. With No. 7 needles and main colour wool, cast on 38 sts. for size 38 and 40; 40 sts. for size 42 and 44; and work 3 inches in k, 2, p, 2 ribbing.

Change to No. 4 needles and stockings, and proceed to work from the graph. Work the design by the "Coloured Pattern Knitting" directions, using a ball of the main colour at the beginning and end of the needle, and the different colours indicated in the centre. Inc. as indicated for the sleeve shapings, and after working the shapings for the top of the sleeve, cast off on the last row.

LEFT SLEEVE: Work exactly as for the right sleeve until ready to proceed from graph. Change to No. 4 needles and beginning with a k. row, read the k. rows from left to right and the p. rows from right to left, thus the design on the left sleeve pattern will be reversed to correspond with the right sleeve.

ND WOOL

12	SIZE 44
n	12 inches
m	1 sleeve
p	2 sleeves
buttons. 2 STR. x 2 INCHES CHALK YOUR TENSION	
Right White Dark Brown	Start White Dark Brown

Starting!

It, too, together:

kn on graph with pen from right to a square, inc. one

the chest measure necessary to knit the pattern on the graph straight edge will ed pencil for ease

1 that you obtain for a sample piece. Cast off. See larger k.

of same st of more th.

MARY MAXIM
NEW ENGLAND
 MADE IN ENGLAND

Mary Maxim

GRAPH-STYLE
KNITTING PATTERN

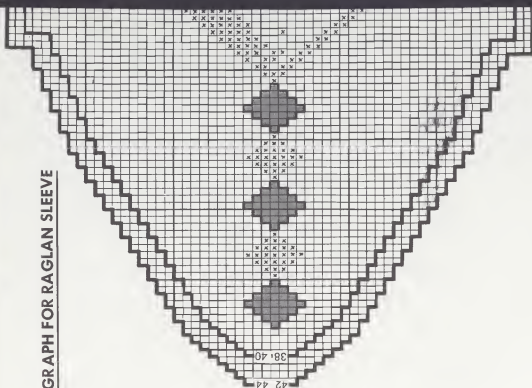
PRAIRIE PRANCERS
 MEN'S 4 PLY CARDIGAN
 SIZES: 38-40-42-44
 No. 401

Price 6d.
 Post free 7d. 6c
 Pattern 402c
 Canada 402c

AN ORIGINAL KNITTING DESIGN BY **Mary Maxim**

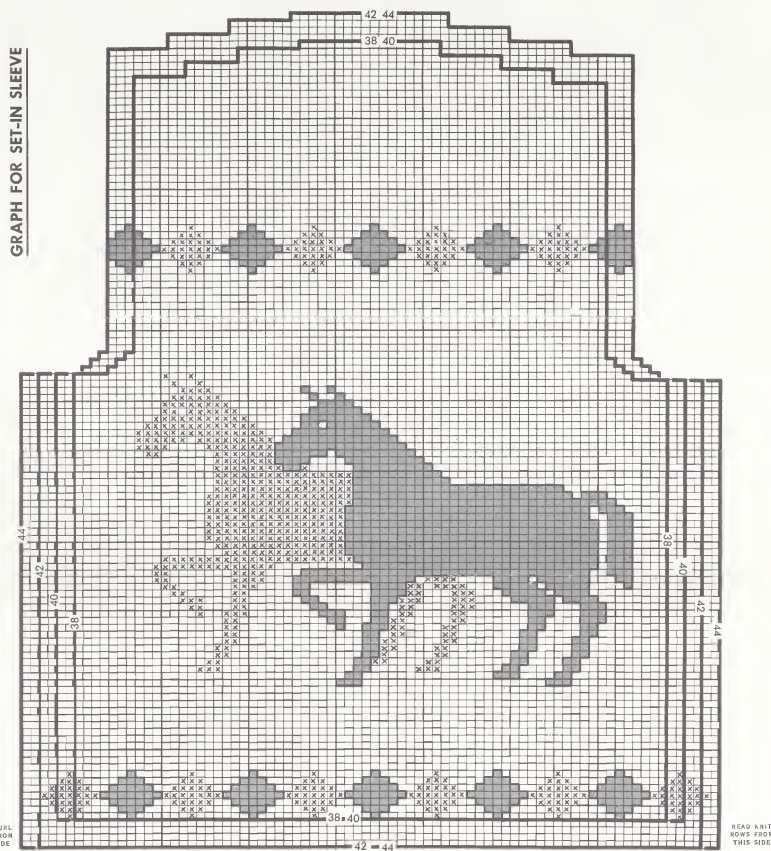
* Patented 1957 in Canada, U.S. Patent Pending

GRAPH FOR RAGLAN SLEEVE



RIGHT SLEEVE

BACK



KNIT 3 INCHES FIRM RIBBING BEFORE STARTING GRAPH

BACK: Begin at the lower edge. With No. 7 needles and main colour wool, cast on 68 sts. for size 38; 72 sts. for size 40; 76 sts. for size 42; 80 sts. for size 44; and work 3 inches in k.2, p.2 ribbing.

Change to No. 4 needles and stocking-st. (one row k. one row p.) and proceed to work from the graph. When working the row of diamonds, weave the wool or wools not in use along on the wrong side of work, this is described in the paragraph "Fair-Isle Knitting".

Use the "Coloured Pattern Knitting" method for the two horses, joining on a small ball of the colour indicated for each leg, using small balls of the main colour in between the design and at each end of the needle. Then use only one ball of each colour for the body and head of each horse, with a ball of main colour at either side of the design.

Dec. for the armholes as indicated, and after working the row of diamonds across the shoulders by the "Fair-Isle Knitting" method, dec. for the shoulders and cast off on the last row.

RIGHT FRONT: Begin at the lower edge. With No. 7 needles and main colour wool, cast on 38 sts. for size 38; 39 sts. for size 40; 41 sts. for size 42; 42 sts. for size 44.

1st row: K. 4, rib in k. 2, p. 2 to end of row.

2nd row: Rib to last 4 sts., k. 4.

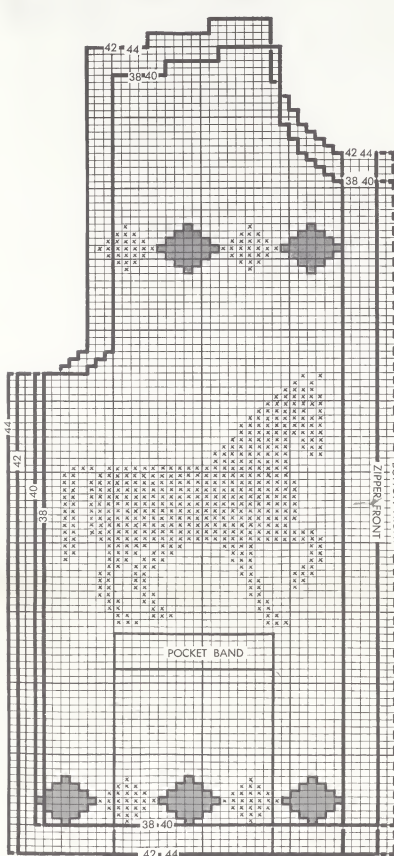
Rep. these 2 rows for 3 inches, finishing with a 2nd row. Change to No. 4 needles and stocking-st., keeping the 4 sts. of the front band in garter-st. as before, proceed to work from the graph. Follow the "Fair-Isle Knitting" method for the row of diamonds, weaving the wool or wools not in use along on the wrong side of work. Continue until the 22nd row of the graph (35th row for size 42 and 44) has been completed, then work the pocket band as follows. **23rd row:** (27th row for size 42 and 44) K. 12, p. the next 18 sts., k. 4 to end of row. **24th row:** (28th row for size 42 and 44) P. to last 4 sts., k. 4. Rep. the last 2 rows once more. **27th row:** (31st row for size 42 and 44) K. 12, cast off the next 18 sts. purlwise, k. to end of row. Leave this work for the present and proceed to k. the pocket piece.

With No. 4 needles and main colour wool, cast on 18 sts. and work 27 rows (31 rows for size 42 and 44) in stocking-st., beginning and finishing with

fold down if
RAGLAN SLEEVE
preferred

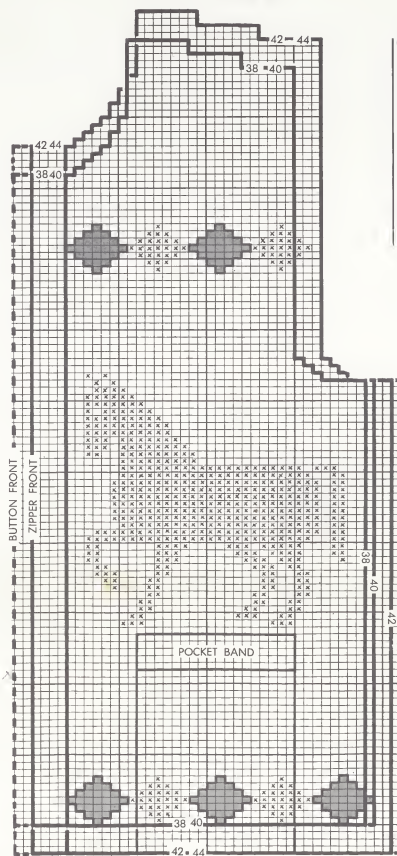


RIGHT FRONT



KNIT 3 INCHES FIRM RIBBING BEFORE STARTING GRAPH

LEFT FRONT



GRAPH FOR SET-IN SLEEVE

a k. row. Return to the right front. **28th row:** (32nd row for size 42 and 44) P. the sts. to the pocket opening, p. across the sts. of the pocket piece, p. 8, k. 4.

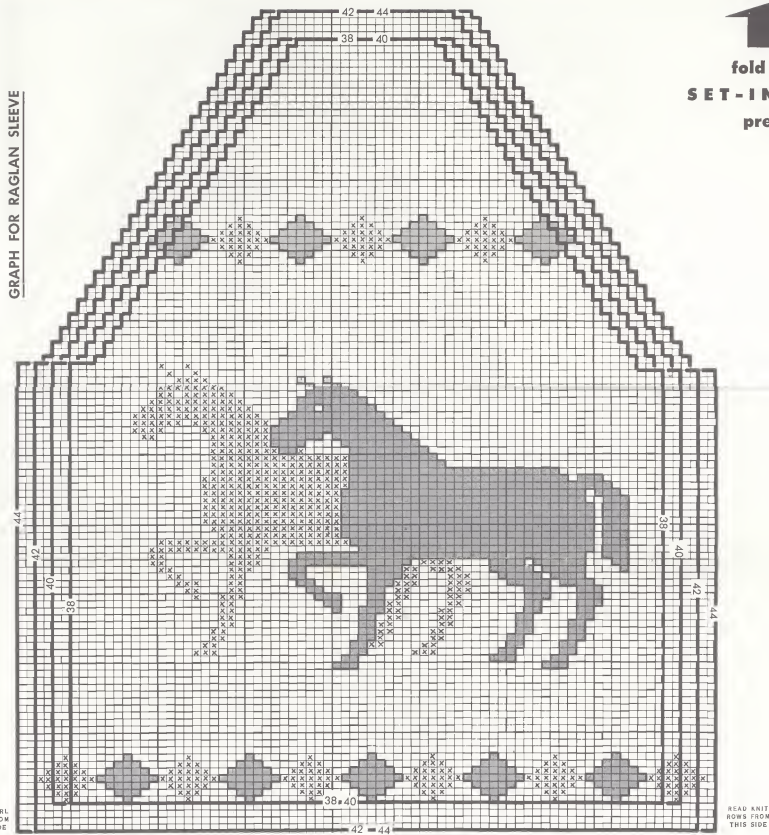
Continue to follow the graph, working the horse by the "Coloured Pattern Knitting" method as described for the back. Dec. for the armhole, then work the row of diamonds as previously described at the beginning of the right front. After working the neck and shoulder shapings, cast off on the last row.

LEFT FRONT: Work exactly as for the right front, but finish the ribbing with a 1st row. Change to No. 4 needles and stocking-st. and proceed to work from the graph to correspond with the right front.

BUTTONHOLES: If buttonholes are to be used, they are worked on the left front. Cast on 2 extra sts. to allow for overlapping, and keep these 2 extra sts. in the garter-st. band, so that it will be 6 sts. in width. Rib the first 4 rows as given at the beginning of the right front. **5th row:** K. 2, cast off 2, k. 1, rib to end of row. **6th row:** Rib to garter-st. band, k. 2, cast on 2, k. 2. Make further buttonholes every 16 rows.

GRAPH FOR RAGLAN SLEEVE

BACK



KNIT 3 INCHES FIRM RIBBING BEFORE STARTING GRAPH

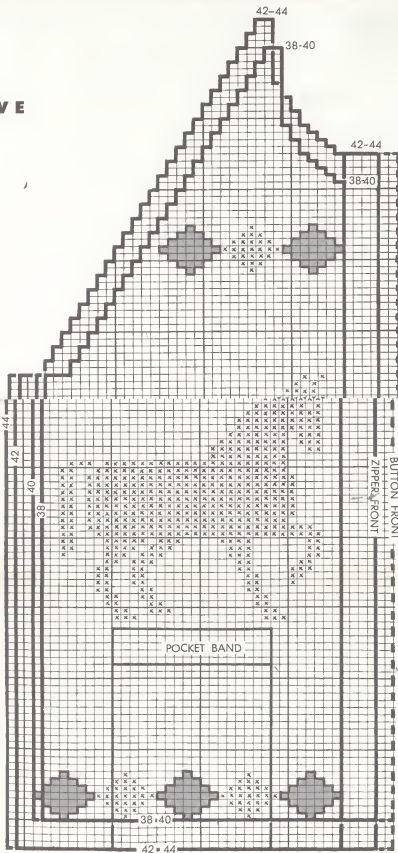
BACK: Begin at the lower edge. With No. 7 needles and main colour wool, cast on 68 sts. for size 38; 72 sts. for size 40; 76 sts. for size 42; 80 sts. for size 44; and work 3 inches in k. 2, p. 2 ribbing.

Change to No. 4 needles and stocking-st. (one row k, one row p.) and proceed to work from the graph. When working the row of diamonds, weave the wool or wools not in use along on the wrong side of work, this is described in the paragraph "Fair-Isle Knitting".

Use the "Coloured Pattern Knitting" method for the two horses, joining on a small ball of the colour indicated for each leg, using small balls of the main colour in between the design and at each end of the needle. Then use only one ball of each colour for the body and head of each horse, with a ball of main colour at either side of the design.

Dec. for the armholes as indicated, and after working the row of diamonds across the shoulders by the "Fair-Isle Knitting" method, dec. for the shoulders and cast off on the last row.

RIGHT FRONT



KNIT 3 INCHES FIRM RIBBING BEFORE STARTING GRAPH

RIGHT FRONT: Begin at the lower edge. With No. 7 needles and main colour wool, cast on 38 sts. for size 38; 39 sts. for size 40; 41 sts. for size 42; 42 sts. for size 44.

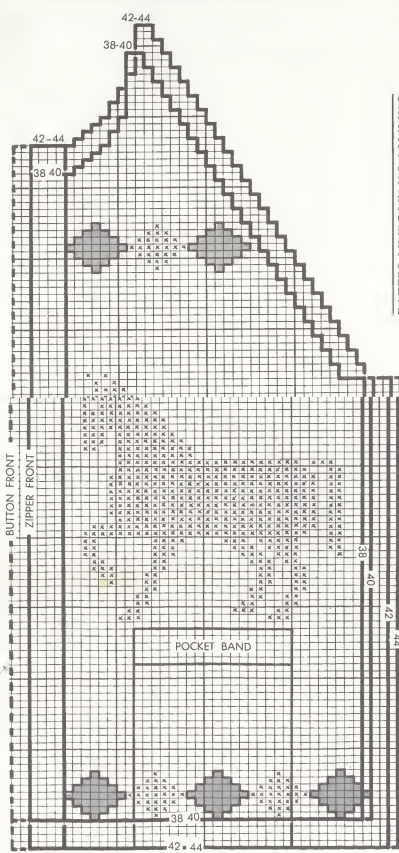
1st row: K. 4, rib in k. 2, p. 2 to end of row.

2nd row: Rib to last 4 sts., k. 4.

Rep. these 2 rows for 3 inches, finishing with a 2nd row. Change to No. 4 needles and stocking-st., keeping the 4 sts. of the front band in garter-st. as before, proceed to work from the graph. Follow the "Fair-Isle Knitting" method for the row of diamonds, weaving the wool or wools not in use along on the wrong side of work. Continue until the 22nd row of the graph (26th row for size 42 and 44) has been completed, then work the pocket band as follows. **23rd row:** (27th row for size 42 and 44) K. 12, p. the next 18 sts., k. to end of row. **24th row:** (28th row for size 42 and 44) P. to last 4 sts., k. 4. Rep. the last 2 rows once more. **27th row:** (31st row for size 42 and 44) K. 12, cast off the next 18 sts. purwise, k. to end of row. Leave this work for the present and proceed to k. the pocket piece.

With No. 4 needles and main colour wool, cast on 18 sts. and work 27 rows (31 rows for size 42 and 44) in stocking-st., beginning and finishing with

LEFT FRONT



a k. row. Return to the right front. **28th row:** (32nd row for size 42 and 44) P. the sts. to the pocket opening, p. across the sts. of the pocket piece, p. 8, k. 4.

Continue to follow the graph, working the horse by the "Coloured Pattern Knitting" method as described for the back. Dec. for the armhole, then work the row of diamonds as previously described at the beginning of the right front. After working the neck and shoulder shapings, cast off on the last row.

LEFT FRONT: Work exactly as for the right front, but finish the ribbing with a 1st row. Change to No. 4 needles and stocking-st. and proceed to work from the graph to correspond with the right front.

BUTTONHOLES: If buttonholes are to be used, they are worked on the left front. Cast on 2 extra sts. to allow for overlapping, and keep these 2 extra sts. in the garter-st. band, so that it will be 6 sts. in width. Rib the first 4 rows as given at the beginning of the right front. **5th row:** K. 2, cast off 2, k. 1, rib to end of row. **6th row:** Rib to garter-st. band, k. 2, cast on 2, k. 2. Make further buttonholes every 16 rows.

fold back if
SET-IN SLEEVE
preferred

GRAPH FOR RAGLAN SLEEVE

MATERIALS REQUIRED

To ensure a correct fit, use only **MARY MAXIM 4 PLY NORTHLAND WOOL**

(Quantities shown are given in 4 oz. skeins.)

NEEDLES: 1 pr. No. 4, 1 pr. No. 7 English Gauge — 15" long.
(Equivalent in American gauge needles: 1 pr. No. 9, 1 pr. No. 6.)

GAUGE: 3½ Stitches and 5 Rows = 1 inch.

1 Steel Bodkin Needle for sewing seams, 1 Heavy-weight open end zipper OR 8 large buttons.

		SIZE 38	SIZE 40	SIZE 42	SIZE 44
Background	Colour <input type="checkbox"/>	11 skeins	11 skeins	11 skeins	12 skeins
Horses and Trim	Colour <input type="checkbox"/>	1 skein	1 skein	1 skein	1 skein
Horses and Trim	Colour <input checked="" type="checkbox"/>	2 skein	2 skein	2 skein	2 skeins
SUGGESTED COLOUR COMBINATIONS					
Background	White	White	Rust		
Horses and Trim	Rust	Scarlet	White		
Horses and Trim	Dark Brown	Black	Dark Brown		

GENERAL INSTRUCTIONS — Read Carefully Before Starting!

ABBREVIATIONS: K., knit; p., purl; st., stitch; sts., stitches; rep., repeat; tog., together; inc., increase or increasing; dec., decrease or decreasing; sl., slip.

Each square on the graph represents a stitch. Changes in colour are shown on graph with different symbols. Every row is shown, both k. and p. rows. Follow the graph from right to left for k. rows, and from left to right for p. rows. When graph shows an extra square, inc. one st., when graph shows one less square, dec. one st.

Sizes 38-40-42-44 are all shown on the graph. These sizes are based on the chest measurements, however additional room for freedom has been included, thus it is not necessary to knit a larger size than the wearer would normally require. Ribbing is not included on the graph but it is explained in the printed instructions below each chart. A ruler or straight edge will help in reading the rows on the graph. Outline the size desired with a coloured pencil for ease in following.

GAUGE: 3½ sts. and 5 rows = 1 inch on No. 4 needles. It is very important that you obtain the correct tension as this will determine the finished size of the garment. Make a sample piece as follows: With No. 4 needles cast on 14 sts., k.1 row, p.1 row for 20 rows. Cast off with a damp cloth. Check your tension carefully. If smaller, try again with a size larger needle. If larger try again with a smaller needle.

INCREASES AND DECREASES: To inc. one st., work into front, then into back of same st slipping it off left hand needle. To dec. one st., take 2 sts. tog. Decreases of more than one st. must be cast off at the beginning of the row.

MISS MARY MAXIM,®
PARIS, ONTARIO

MISS MARY MAXIM,®
Port Huron,
MICHIGAN, U.S.A.

MISS MARY MAXIM,®
LEICESTER, ENGLAND

PRINTED IN ENGLAND

00535769

CHUCK YOUR TENSION
7 STS = 2 INCHES

